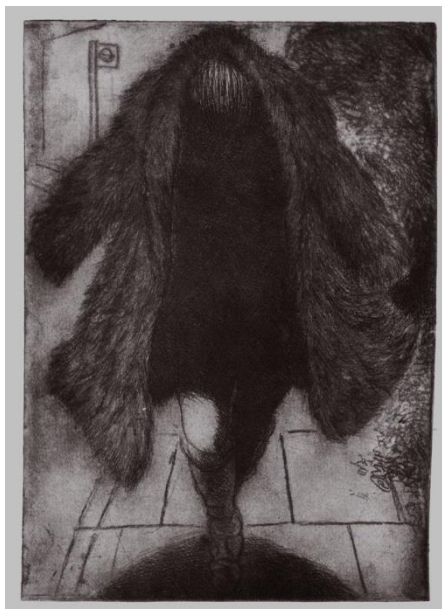


SHORT COURSE DETAILS

4D7244 ETCHING WORKSHOP

Tutor: JOHN T FREEMAN

Dates: 4 DAYS SUNDAY 17 SEPTEMBER – THURSDAY 21 SEPTEMBER



Etching is a traditional method of printmaking that dates back 500 years. Sheets of metal are coated with a wax, marks are drawn onto the wax using steel etching needles. The metal sheets are then submerged into acid which bites into the metal exposed by the needle. The plate is then cleaned and further coats of wax can be applied to build up the drawing before prints are taken from the plate.

ABOUT YOUR COURSE:

The course is suitable for both complete beginners and advanced students who wish to build upon their experience to explore and develop new approaches to etching.

If you are new to etching you will be introduced in a constructive way to the traditional methods and techniques. You will work on a portrait, a landscape, and an architectural subject that will incorporate a variety of techniques including aquatint, spit-bite and soft-ground.

If you are more advanced, you will have the opportunity to develop your practical skills and theoretical attitudes towards your own work placing it within the historical development of the etching tradition.

The tutor will demonstrate techniques and support you throughout the course with one-to-one sessions, group discussions and informative talks on the historical aspects of etching.

By the end of the course you will have gained knowledge and experience of the etching process as well as developed your technical and subjective approaches to making the etched image.

LEVEL: SUITABLE FOR ALL

A subject focused course that is delivered to suit any level of experience from beginner to advanced practitioner. A structured start is followed by guided independent practise.

ABOUT YOUR TUTOR:

John Freeman, artist and etcher, studied at Bath Academy of Art, Corsham, and Chelsea and exhibits widely. In 2006 his book *Portrait Drawing* was published by Crowood Press.

TIMETABLE:

This course is held in the Print Studio and the Auditorium, a ten minute walk from the main college through the gardens. Lunch and dinner are taken at the College but tea and coffee are provided for you at the Garden Restaurant.

Arrival day: Sunday 17 September

From 4.00pm	Arrival for residential students
6.45pm	Non-residential students please arrive by 6.45pm for welcome chat and dinner
7.00pm	Dinner
8.00pm – 9.00pm	First teaching session – attendance is an essential part of the course.

Other days: Monday 18 to Wednesday 20 September

9.15am	Morning classes start
10.30am	Coffee
11.00am	Morning classes continue
12.45pm	Lunch
2.00pm	Afternoon classes
3.30pm	Tea
4.00pm	Afternoon classes continue
5.00pm	Classes finish
From 6.30pm	Dinner
8.00pm	Evening working – workshops are available until 10pm for those wishing to work on providing this has been discussed with the tutor. These sessions are untutored.

Departure day: Thursday 21 September

(Residential students to vacate rooms by 10am)

9.15am	Morning classes start
10.30am	Coffee
11.00am	Morning classes continue
12.45pm	Lunch
2.00pm	Afternoon classes
3.00pm	Classes finish
3.30pm	Tea then departure

REQUIRED PREPARATION:

Beginners are advised to acquire 'INTAGLIO PRINTMAKING' BY MICHAEL BARRATT.

MATERIALS FOR YOUR COURSE:

We have a generously stocked craft shop, which opens daily from 8.30am–2pm.

For any materials you need to purchase from the shop, we suggest you do so during the first morning of your course, after having discussed with your tutor.

Materials included in the course fee:

The course fee includes the cost of providing: inks, basic papers and chemicals.

Available from the Shop:

Paper – Hahnemuhle pale
Tissue paper
Carbon paper
Tracing paper (thin)
Large sheets of blotting paper
Copper plate – approx 18 gauge

Please bring any of the materials listed, if you have them, and in addition:

Paint-rags and overalls

Although images are provided to practice with please bring any personal imagery

HEALTH AND SAFETY:

The tutor instructs students in health and safety issues relevant to this course. Students may work unsupervised on agreed projects once they have satisfied the tutor as to their competence. There may be restrictions on the equipment available to students in the tutor's absence. All Personal Protection Equipment, apart from footwear, is provided by the College.

FRE24D5